
Instructions to Authors

Contents	1	Scope & Policy
	2	Types of papers accepted
	3	Preparation of the manuscript
	4	Submission of manuscripts
	5	Reviewing process
	6	Revision
	7	Submission of disk
	8	Proofs
	9	Page charges
	10	Offprints

1 Scope and policy

Journal of Electron Microscopy, the official publication of the Japanese Society of Electron Microscopy, aims to promote research in advanced electron microscopy and new scanning probe microscopy by publishing informative articles dealing with their theories, methods, techniques and instrumentation as well as their applications to life and material sciences. Although the journal is closely associated with the society, contributions by non-society members are welcome.

2 Types of papers accepted

Full-length papers

The full-length papers should present new findings of broad interest and describe significant and original results to be critically evaluated.

Letters

'Letters' of exceptional interest or with novel findings will be rapidly accepted and published.

Notes

'Notes' giving brief reports mainly of technical and instrumental importance will be accepted.

Reviews

The journal accepts 'Reviews' that deal with particular subject areas in a thoughtful and personal manner. They are commissioned by the Editor-in-Chief, the Managing Editor, Regional Editor or Executive Editors.

3 Preparation of the manuscript

Length

Full-length papers are preferably six to eight printed pages. This is approximately equivalent to 22 double-spaced type pages (including references, figure legends

and tables). Letters and Notes should not exceed four and two printed pages, respectively.

General format

All manuscripts should be typewritten on one side of A4 (approx. 210 × 297 mm or 8½ × 11 in.) white paper with double spacing throughout (including figure legends and references) and with 2.5 cm (1 in.) margins. Pages should be numbered sequentially. Do not hand-write mathematical equations and chemical formulae. One set of figures should be mounted and ready to be sent to the printers. The other copies of the figures can be high quality photocopies for line drawings, but photographs or very high-quality photocopies should be provided for halftone figures.

Sections

Full-length papers should start with an ABSTRACT, followed by a brief INTRODUCTION, which outlines the historical or logical origins of the study, a section on METHODS and one on RESULTS in which the findings are presented in a compact form with minimal reference to earlier literature or to possible interpretations. The DISCUSSION should be devoted to interpreting the results from various viewpoints and to considering their physical and biological significance. Also CONCLUDING REMARKS are obligatory. They may start with a brief summary of the results, but repetition of the abstract should be avoided.

Letters and notes should also start with an ABSTRACT, but there should be no other individual sections afterwards.

Title page

This must include the following: title, full first name and surname of each contributor followed by full address, telephone and fax number, E-mail address, name of the contributor who will deal with correspondence including proofs and a running title not in excess of 50 letters and

spaces. Six keywords should be provided for use by indexing services. The total number of pages and figures being submitted should also be indicated on this page.

Abstract

It should be written in complete sentences and should summarize the content in 250 words or less (for Full-length papers and Reviews) or 100 words or less (for Letters and Notes). If references are used in an abstract, they must include the author(s), journal title, volume number, starting page and year. Avoid abbreviations in abstracts as far as possible.

Main text

There should be an indication in the main text to show the most appropriate placement of each table and illustration. Acknowledgements, references, tables and figure legends should follow the main text in that order.

References

References are to be cited in the text by a number in brackets and should be numbered in order of first appearance. An example is: 'McMichael and Gotch [12] have reported . . .'. Where there are more than three authors, the citation in the text should use the formulation '*et al.*'. An example is: 'This observation has been reported by Shackelford *et al.* [24]'.

In the list of references papers from journals should be listed thus:

Hirokawa K, Kokubo Y, Kitamura M, and Shiraishi T (1987) Fine structure of intestinal fibroblasts autoradiographic and three dimensional studies. *J. Electron Microsc.* **37**: 213–228.

Books should be listed as:

Squire J (1981) *The Structural Basis of Muscular Contraction*. (Plenum Press, New York.)

McMichael A J and Gotch F (1987) T-cell antigens new and previously defined clusters. In: *Leukocyte Typing III*, ed. McMichael A J, pp. 31–35, (Oxford University Press, Oxford).

Tables

Tables should be typed on separate sheets and numbered consecutively with Roman numerals. They should be self-explanatory.

Illustrations

Illustrations should be presented in the order in which they are mentioned in the text. Illustrations should be numbered as a single series and should have the name of the first-named author and the figure number on the back. Instructions relating to the final size of the figure must be clearly specified by indicating on the back of the figure the final size required. The final size of printed figures cannot exceed 174 mm wide × 237 mm deep for a full page illustration and 84 mm wide for a single-

column one. All symbols and letters must be clearly produced using printed paste-on or transfer lettering. Labels should be large enough for the final reduction (letters or numbers less than 2 mm high are not acceptable in the final print) and should show clearly against the background. If there are two or more parts to a figure they should be labelled a, b, c, etc (i.e. lower case letters).

Photographs must be glossy prints, and should be mailed with protection against bending. They must include magnification scale and should be mounted. Micrographs are reproduced without reduction and should not exceed 174 × 237 mm. All of the figures in a group should have approximately the same contrast values. Special instructions to the printer may be written on the back to produce the best results.

Colour figures will be published in the journal but authors are required to pay the costs. Colour photographs can be published without charge to the authors if the Editor-in-chief considers the figures to be of utmost importance to the journal. Please contact the editor in charge of your paper for details.

Units

Use of SI units is mandatory.

4 Submission of manuscripts

Submission of a paper will be taken to imply that it reports unpublished work (except for Reviews) and that it is not being considered for publication elsewhere. Three (in cases of full-length papers) or two (in cases of Reviews, Letters, and Notes) copies of the complete manuscript including figures, tables and photographs should be sent to the following addresses.

Submission from Japan

Editorial Office of Journal of Electron Microscopy, c/o Oxford University Press (OUP)-Tokyo, 1-1-17-5F Mukogaoka, Bunkyo-ku, Tokyo 113-0023, Japan.

Submission from outside Japan

Those who wish to submit their papers from outside Japan should send the papers to either one of the Regional Editors whose names and addresses are listed below or the Editorial Office c/o OUP-Tokyo. Prospective contributors are requested to select the Regional Editor in their field (either material or life sciences).

Manuscripts will not be returned. Those authors who wish the original artwork to be returned should indicate this on the title page of the manuscript.

Regional Editors

Prof. Dr Hermut Bartels, Anatomische Anstalt, Universität München, Pettenkoferstrasse 11, D-80336 München, Germany.

Dr David Chems, H. H. Wills, Physics Laboratory, Bristol University, Tyndall Avenue, Bristol BS8 1TL, UK.

Prof. A. R. Lieberman, Anatomy Building, Faculty of Life Sciences, University College London Medical School, Gower Street, London WC1E 6BT, UK.

Prof. Randal Morris, Department of Cell Biology, Neurology and Anatomy, University of Cincinnati, Cincinnati, OH 45267-0521, USA.

Prof. Pietro M. Motta, Istituto di Anatomia Umana Normale, University of Rome La Sapienza, Via A. Borelli 50, I-00161, Rome, Italy.

Dr Stephen J. Pennycook, Corporate Fellow and Electron Microscopy Group Leader, Oak Ridge National Laboratory, Solid State Division, PO Box 2008, Oak Ridge, TN 37831-6030, USA.

Prof. Manfred Rühle, Max-Planck-Institut für Metallforschung, Heisenbergstrasse 1, D-70569 Stuttgart, Germany.

Dr G. Van Tendeloo, EMAT, University of Antwerp (RUCA), Groenenborgerlaan 171, B-2020 Antwerp, Belgium.

5 Reviewing process

The paper will be assigned to one Executive Editor or Regional Editor, who asks one (in the case of Letters, Notes, and Reviews) or two (in the case of full-length papers) referees to review it. The Regional Editor or Executive Editor in charge will ask authors for revision, if necessary, or notify rejection based on the comments by the referees. The Regional Editor or Executive Editor in charge will decide the acceptance or rejection of the paper. The Editor-in-Chief or Managing Editor may take on the final decision at their request.

6 Revision

When a manuscript is returned to authors for revision prior to final acceptance, the revised version must be submitted within 3 months after it is returned.

7 Submission of disk

Authors are requested to submit a word processor disk for the final version of the manuscript. When the author returns the revised version of the manuscript to the Regional Editor or Executive Editor in charge, he/she is requested to attach one disk containing the final version. Notes on disk preparation and a disk submission form are published in each issue.

8 Proofs

Authors are sent page proofs. They should be checked within 48 hours for typographical errors and returned to the publisher by express post. Essential changes of an extensive nature may be made only by insertion of a Note added in proof. A charge (minimum US \$50) will be made to authors who insist on amendment within text at the page proof stage.

9 Page charges

There will be no page charges.

10 Offprints

Thirty offprints of each contribution are provided free of charge. Further offprints can be ordered by returning the order forms provided with the proofs.

Guide for authors preparing electronic documents

DO

Enter text in the style and order of the journal.

Insert figure captions and tables at the end of the file.

Save diagrams, figures, graphs or illustrations generated electronically as separate files and not embedded into the text file.

Type references in the correct order and style of the Journal.

Type unjustified, without hyphenation, except for compound words.

Type headings in the style of the Journal.

Use the TAB key once for paragraph indents.

Where possible use Times for the text font and Symbol for the Greek and special characters.

Use the word processing formatting features to indicate **Bold**, *Italic*, Greek and Maths, ^{Superscript}, _{Subscript} characters.

Indicate clearly any special characters that you have drawn by hand.

Check the final copy of your paper carefully, as any spelling mistakes and errors will be faithfully translated into the typeset version. In the case of a mismatch between disk and hard copy, the hard copy will be taken as the definitive version.

Indicate on the form overleaf the contents of each file.

Supply three hard copy printouts of the paper.

DO NOT

Enter carriage returns to obtain spacing between lines, paragraphs, references etc. The space required is generated automatically by the typesetters.

Use double spaces after each sentence within a paragraph.

Use the automatic page numbering, running titles and footnote features of your word processing programme. Number the hard copies by hand at the bottom of the page.

Include any copyright material (e.g. word processor software or operating system files) on the disk.

DISK SUBMISSION

After the manuscript has gone through all the review and editing stages, copy the data onto a clean newly formatted disk. To avoid confusion do not copy any irrelevant files and/or back-up files onto the disk.

Apple Mac users should ensure that the disk wastebasket is empty before submitting the disk.

Use the first-named author's name or manuscript number for the disk label and the file name.

To avoid loss or damage in transit ensure that the disk is adequately protected and always keep a copy of the data on your computer and/or back-up disc.

Please note OUP does not intend to return the disk to the originator.

For further information contact:

Journals Department
Academic Division, Oxford University Press
Great Clarendon Street, Oxford OX2 6DP, UK
Telephone: (+44 1865 or 01865) 556767 Fax: (+44 1865 or 01865) 267773

OUP Journals Manuscript/Disk Submission Form

Completion of all the relevant sections of this form will assist in a swift and efficient publication of your paper.

EDITORIAL OFFICE USE
MS Number: _____
Received: _____
Revised: _____
Accepted: _____

Title: _____

Author(s): _____

Corresponding Author: _____

Address: _____

Telephone: _____ **Fax:** _____ **Email:** _____

Number of pages: _____ **Number of Tables:** _____ **Number of Figures:** _____

Disk Information

Whilst we can accept most computer and word processor disks, the preferred combinations are either PC MS-DOS, PC WINDOWS or APPLE MAC, and either Microsoft Word or WordPerfect.

File Names / Contents: _____

Computer Make / Model: _____ **Format: MSDOS/Windows/Apple Mac**

Word Processor Software: _____ **Version Number:** _____

Please list any special characters used:

Key/character used							
Denoting							

Journal of Electron Microscopy

Supplementary Issue

STRUCTURE AND PROPERTIES OF MULTI-LATTICE MATERIALS: Toward Characterization and Control of Nanocrystals

Hokkaido Conference, Japan

Editors:

K Yoshihara and K Furuya

Papers include:

- Atom clusters and their related phenomena (Review) H Fujita
- Multiphase and multicomponent nanoscale inclusion in aluminum E Johnson et al
- Formation of metal precipitates and voids by zinc diffusion in GaP Ch Jager et al
- Nano-fabrication of copper quantum dots in MgO single crystal films and their oxidation processes studied by HRTEM A Matsumoto and N Tanaka
- Factors affecting the accuracy of lattice spacing determination by HREM in nanometer sized Pt particles PA Crozier et al

Please note that this special supplementary issue is a limited edition and orders are subject to availability. Members of the following societies are entitled to purchase copies at a special rate:
JSEM, RMS, ASEM, AuSEM, BMS, EMAG, SCANDEM, SSOEM
To order just complete and return the order form below.

Order form

micro/99/01

- Please enter my order as indicated below
Please note. £ Sterling applies in Europe, US\$ elsewhere

Journal of Electron Microscopy Supplementary Issue
Ref: 99:01 Structure and Properties of Multi-Lattice Materials

- Members (see above): £7.99/\$12.50

I am a member of

OR

- Non-members: £18.50/\$29.50

DELIVERY ADDRESS DETAILS

NAME

ADDRESS

POSTCODE/ZIP

COUNTRY

PAYMENT DETAILS

- I enclose the correct remittance
(Please make cheques payable to Oxford University Press)
- Please charge my Access/Visa/American Express/Mastercard/JCB

CARD NO

EXPIRY DATE

SIGNATURE

If credit card address differs from delivery address, please send details.

RETURN ADDRESS

Please return your order form to: Journals Marketing, Oxford University Press, Great Clarendon Street, Oxford OX2 6DP, UK. Fax: +44 (0)1865 267835. Subscriptions can also be placed by telephone using any major credit card. Please call the Journals Subscription Department on +44 (0)1865 267907. E-mail: jnl.orders@oup.co.uk

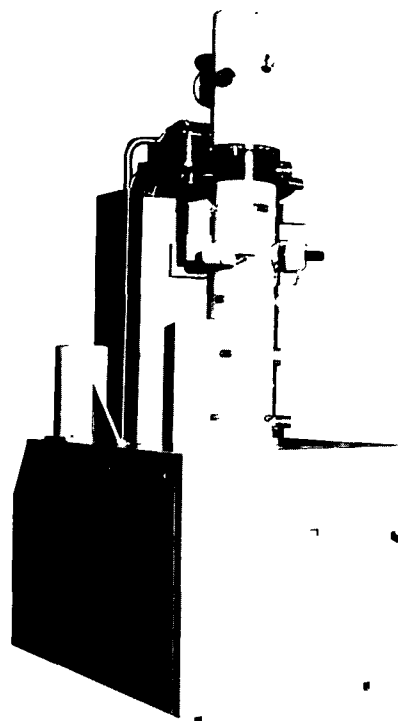
In the Americas, please return to: Journals Marketing, Oxford University Press, 2001 Evans Road, Cary, NC 27513, USA. Fax: 919 677 1714. Subscriptions can also be placed by telephone using any major credit card. Please call the Journals Customer Services on 1 800 852 7323 (USA and Canada only) or 919 677 0977 (outside of the USA and Canada) E-mail: jnlorders@oup-usa.org

OXFORD
UNIVERSITY PRESS

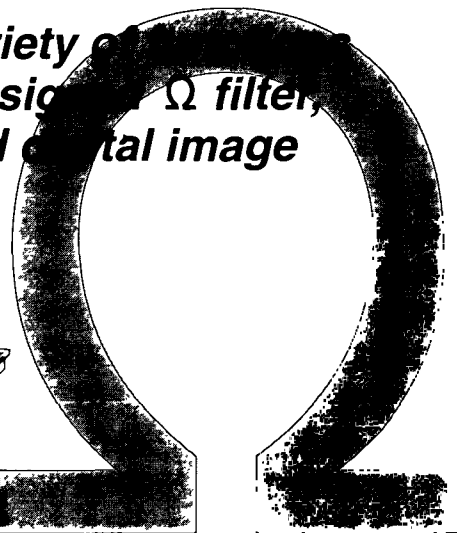
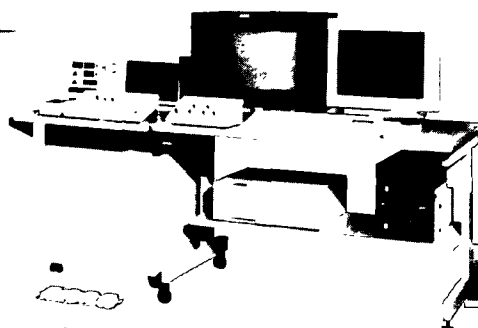
They Will Open Up an Entirely New World of Electron Microscope

JEM-2010FEF

Field Emission
Energy Filter Electron Microscope



*Provided with a variety of options
such as a newly-designed Ω filter,
remote control, and digital image
recording.*

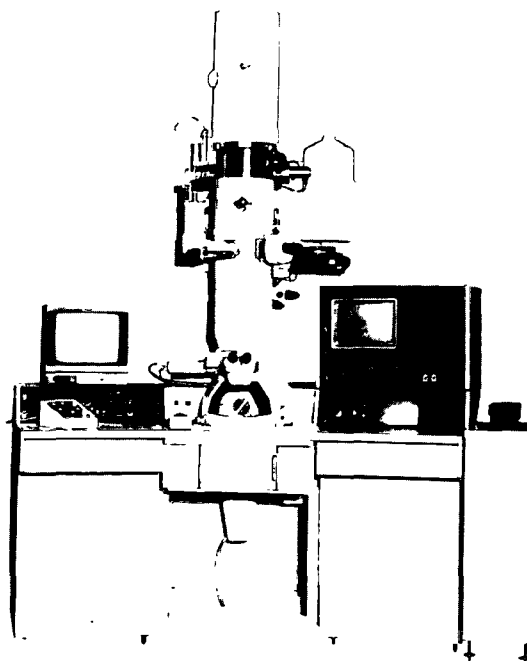


"Licensed by LEO Elektronemikroskopie GmbH"

JEM-2010F

Field Emission Electron Microscope

The JEM-2010F ultrahigh-resolution electron microscope has been developed as an up-to-date easy-to-use instrument. It is an essential instrument for researchers in a wide range of high-tech fields such as physics, chemistry, and biology.



Technology and product quality are our resources



<http://www.jeol.co.jp/>

1-2 Musashino 3-chome Akishima Tokyo 196-8558 Japan Telephone: (042)542-2187 Facsimile: (042)546-5457

Letter

Effect of Ti and Nb additions on Cr depletion at grain boundaries in austenitic stainless steel irradiated with 1 MeV electrons at 523–673 K	<i>Kasahara S, Nakata K, Kuniya J, Takahashi H</i>	431
----------------------------------------------------------------------------------------------------------------------------------------------	----------------------------------------------------	-----

Note

Measurement of and compensation for the difference between voltage and current centres in HRTEM	<i>Moriguchi S, Isoda S, Kobayashi T</i>	437
-------------------------------------------------------------------------------------------------	------------------------------------------	-----

Biological: Full-length papers

Ultrastructural and functional changes of the proximal tubular epithelial cells in the renal cortex from spontaneously diabetic KKAY mice	<i>Ina K, Kitamura H, Nagai K, Tatsukawa S, Fujikura Y</i>	443
-------------------------------------------------------------------------------------------------------------------------------------------	------------------------------------------------------------	-----

Structural injury of osteosarcoma mitochondria by a novel antitumour agent, 2-methylfuranonaphthoquinone	<i>Pan J, Koyama J, Matayoshi A, Hirai K-I</i>	449
----------------------------------------------------------------------------------------------------------	------------------------------------------------	-----

Ultrastructural observations of dental epithelial cells and enameloid during enameloid mineralization and maturation stages in stingrays, <i>Urolophus aurantiacus</i> , an elasmobranch	<i>Sasagawa I, Akai J</i>	455
------------------------------------------------------------------------------------------------------------------------------------------------------------------------------------------	---------------------------	-----

Letter

Effects of ovariectomy on bone morphology in maxillae of mature rats	<i>Ishihara A, Sasaki T, Debari K, Furuya R, Kawawa T, Ramamurthy NS, Golub LM</i>	465
----------------------------------------------------------------------	------------------------------------------------------------------------------------	-----

Cover illustration. Computer processed convergent-beam electron diffraction (CBED) pattern of (100) GaAs. The CBED pattern was recorded on an imaging plate and processed by the software 'Spyglass transform' on a Macintosh computer.

Please visit the journal's world wide web site at <http://www.jmicro.oupjournals.org>

Journal of Electron Microscopy is fully covered in the BECI (Biomedical Engineering Citation Index), ISL, Philadelphia, Pa, USA.

